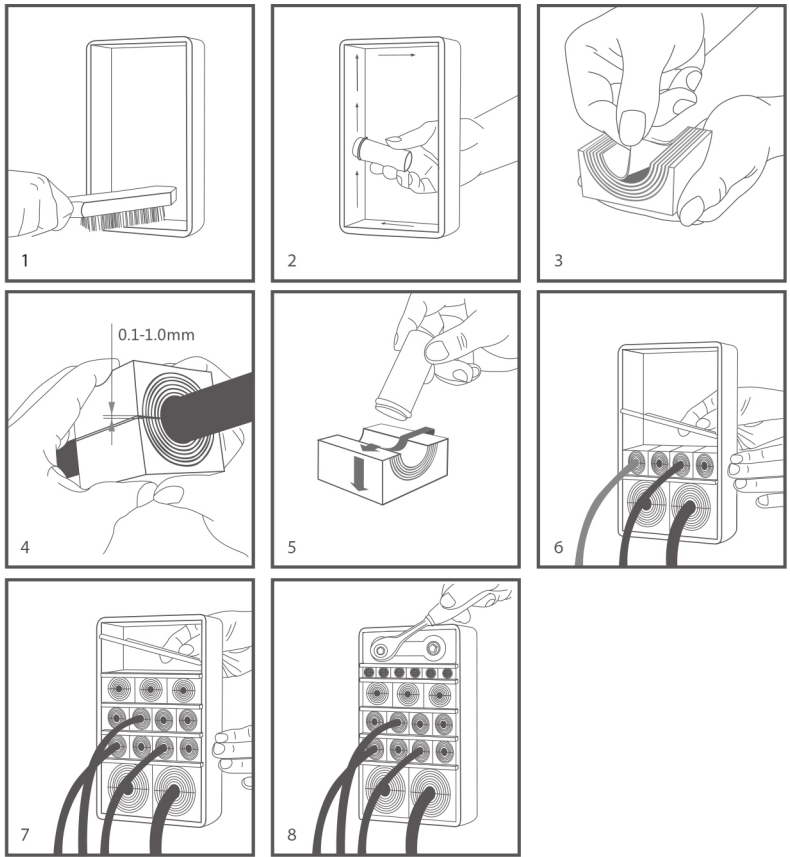


安装说明

HOW TO INSTALL



1. 将框架内侧清理干净。
2. 在框架内侧涂润滑脂。
3. 按电缆 / 管道外径剥离模块变径片使其内径与电缆 / 管道外径相适应。
4. 模块与电缆 / 管道配合后，两半模块的侧缝隙在 0.1-1.0mm 间。
5. 模块装入前在其内侧及四周涂上润滑脂。
6. 装好一层模块后须装一块隔层板。
7. 安装最上层模块前应先增加一片隔层板。
8. 将压紧块推至上下定位槽，如果高度不够使用安装工具辅助安装。
9. 顺时针均匀旋紧两螺栓。

- 1.Clean the internal walls of the frame.
- 2.Apply the lubricating liquid to the internal walls.
- 3.Strip the layers of the module to enable the internal diameter to match the external diameter of the cable/pipe well.
- 4.The gap between two halves ranges from 0.1-1.0mm, after the cable/pipe has merged with the module.
- 5.Paste the lubricant on the surface of the module, both internal and external.
- 6.A layer of modules is always followed by the installation of a separating board.
- 7.A separating board must be inserted into the frame before the last layer of modules goes into.
- 8.The keeper block is moved to the slot in the frame. Use the tool for installation if needed.
- 9.Evenly adjust both bolts on it clockwise.